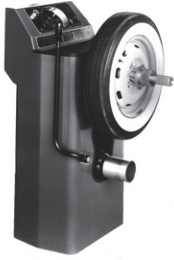


# AUTO EQUIPMENT BUILT ON PERFORMANCE



Driving Innovation Since 1954

Seventy years ago, in 1954, brothers Erminio and Remo Corghi founded Corghi Elettromeccanica in Correggio (RE), Italy. In the 1960s, Corghi revolutionised the industry with the invention of the Artiglio — the world's first rim-clamp tyre changer — setting a new standard in tyre service technology. Today, Corghi remains at the forefront of innovation and is recognised globally as a leader in automotive repair equipment.



## CORGI EXACT LINEAR PLUS 3D ALIGNER

Corghi Exact Linear Plus 3D Aligner

The Wheel Aligner for Everyone  
Simplicity Meets Top-Notch Performance  
Premium Features at an Entry-Level Price.  
User-friendly, quick to learn, and easy to operate.

Compact, high-resolution light targets with front infrared filter for enhanced resistance to solar reflections.  
Automatic target tracking  
Extensive International Database – Over 84,000 vehicle models, including a dedicated USA database.



**\$19,750\***



## CORGI EXACT PRECISION QUATTRO 3D ALIGNER

100%  
MADE IN ITALY

The new Italian-made EXACT Precision Quattro is a state-of-the-art 3D wheel aligner. Featuring four high-resolution digital cameras with global shutter technology ensuring maximum measurement precision. Clamp on tyre quick clamps. Comprehensive Multi-Brand Database covers 84,000+ cars and light-duty vehicles worldwide. Auto-tracking function adjusts the camera beam to the correct working height automatically. NexRemote Tablet. Drive on camera assistant.  
See the demo videos [automaster.co.nz](http://automaster.co.nz)



**\$47,500\***

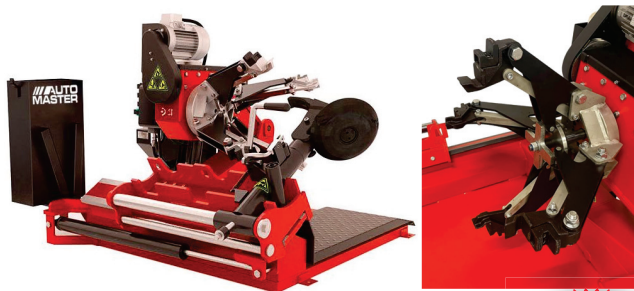


## JULY 2025 PROMO

### AUTOMASTER AM-302 TRUCK & BUS TYRE CHANGER

**NEW**

AM-302 multi-functional universal truck & bus tyre changer  
This machine is designed and engineered to handle rim sizes from 13"-27" inches & tyre diameters of up to 1600mm, with a maximum width of up to 780mm and a max wheel weight of 1500kg.



**\$8,995\***

SPECIFICATION	
Wheel diameter -	13 - 27"
Gearbox Motor	1.3kW/ 1.8kW, 3ph 2 speed
Max Tyre width	780MM
Max tyre diameter	1600mm
Hydraulic Pump Motor	1.5kw 380V-3Ph
Power supply	380V
Max Wheel Weight	1500kg
Warranty	2 Years

### CORGI AGT TILT - MIRRORED HEAVY DUTY TYRE CHANGER

**NEW**

100%  
MADE IN ITALY

Mobile truck & bus tyre changer

Corghi redefines the Mobile Workshop concept with an innovative tyre changer designed to meet all the needs of Roadside Service.

AGT Tilt mirrored – designed for right hand drive vans with siding door on the left – or out of rear doors.

Also available complete with generator & compressor.  
Optional wireless radio remote kit



**\$23,700\***

SPECIFICATION	
Rim diameter	14-26"
Max wheel diameter	1350mm
Tyre width	520mm-960mm
Rim Diameter	14"-26"
Max wheel weight	500kg
Wheel central hole minimum Ø	120mm
Machine weight	450kg
Warranty	2 Years

\*Delivery, installation & GST is not included in advertised pricing

[www.automaster.co.nz](http://www.automaster.co.nz)

Henderson, Auckland & Hornby, Christchurch

0800 214 604 - [info@automaster.co.nz](mailto:info@automaster.co.nz)

**AUTO MASTER**